

Mass / Ashcroft Range Of Products

Pressure gauges

Bourdon tube, Glycerin filled, Low Pressure Diaphragm, Diaphragm seal and Differential pressure gauge in stainless steel. Dial sizes 63, 100, 115, 150 and 250 mm for use in chemical and processing industry, optional with contact devices.

Stainless steel pressure gauges models WP and SF

- According to IS 3624 and EN standard
- Dial size 63 mm, 100 mm, 115 mm, 150 mm, 250 mm
- Accuracy 1.6%, 1.0%, or 0.5%
- Ranges from -1 up to 1000 kg/cm².
- Wetted parts Brass, SS316 or Monel
- Model SF for solid front design.
- Liquid filled cases available on request.
- WP-Weatherproof IP65
- SF - Solid Front case



Stainless steel Electrical contact pressure gauges model EC

- Electrical Magnetic Contact.
- According to IS3624 and EN standard
- Dial size 100 mm and 150 mm
- Accuracy 1.6% or 1.0%
- Ranges from 1000 mm WC up to 1000 kg/cm².
- Wetted parts Brass, SS316 or Monel
- Weatherproof IP65
- 380 Volts AC/Dc, 50 VA, 30 Watts, Maximum current rating 1 Amp.
- SEC - Single Electrical Contact
- DEC - Double Electrical Contact



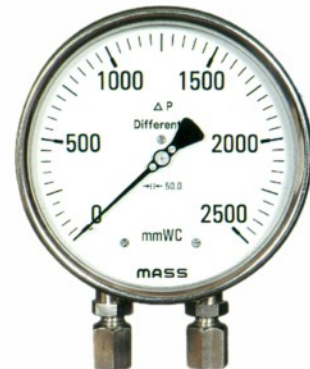
Stainless steel seaming design glycerin filled gauges model GF

- Dial size 63, 100, 115 and 150 mm
- Accuracy 2.0%, 1.6% or 1.0%
- Ranges from 1 kg/cm² up to 1000 kg/cm².
- Case with seamed bezel confirming to IP65
- Wetted parts Brass, SS304 and SS316
- All special dials and OEM Logos



Stainless steel Bellow differential pressure gauges model Diff 100

- Dial size 150 mm
- Accuracy 2.0%, 1.6% or 1.0%
- Liquid filled option available
- All wetted parts SS316L
- Parallel in vertical direction and 45 degree connection are also available.
- Chemical seals with different diaphragm material are available.
- All accessories like swivel adaptor, three-valve manifold & electrical contacts are available.
- Suitable for High Static pressure.



Mass / Ashcroft Range Of Products

Stainless steel diaphragm gauges model SD

- According to IS3624 and EN standard
- Dial size 100 mm or 150 mm
- Accuracy 1.6 % or 1.0 %
- Ranges from 500 mm WC up to 6 bar
- Model SF for solid front design
- Wetted parts stainless steel or PTEE coated
- SD - Shaffer's



Diaphragm seal pressure gauges models DSS, DSF & DSP

- Dial size 63 mm, 100 mm, 115 mm, 150 mm
- Accuracy 1.6 % or 1.0 %.
- Liquid filled option available.
- Different diaphragm material available like Monel, Hastelloy-C, Tantalum, Titanium and other.
- Depending on temp. maximum up to 250 degree C different filling fluids are available like DC-704, Dc-710, FS - 1265, Halocarbon and others.
- For corrosive chemicals Teflon coating on diaphragm and Teflon lining on flanges are available.
- For high temperature application, Cooling tower assembly, impulse tubing or capillary extension are available.



Temperature gauges

Bi-Metal and Mercury/Gas filled temperature gauges in stainless steel. Dial sizes 63, 100, 115, 160 and 250 mm for use in chemical and processing industry, optional with contact devices.



Bi-metal temperature gauges model-BT

- Dial size 65 mm, 100 mm, 115 mm, 150 mm
- Accuracy $\pm 2\%$ or 1.6 % or 1.0 %
- Ranges from (-) 50 degree C to 400 degree C.
- Mounting : Bottom, back, every angle
- Accessories like Thermowells, Electrical contacts are available on request.

Mercury / Gas filled temperature Gauges models - MT and GT

- Dial size 100 mm, 115 mm, 150 mm
- Accuracy $\pm 1.6\%$ or 1.0 % or FSD
- Ranges (-) 50 degree C to 600 degree C.
- Mounting : Bottom, Surface, Back, Panel and Every angle
- Case filling liquid : Glycerin or Silicon oil
- Electrical contacts & Antivibration spring options are available.

