

**PARALLEL GRIPPERS (2 Finger)**  
**MCHB series**

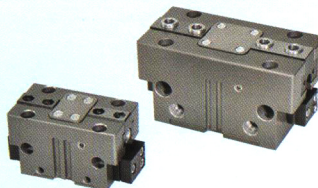
- Available with a comprehensive selection of bore size ( $\phi 12\sim\phi 32$ ) for the various needs.
- The highly accurate, air-driven open closed work.



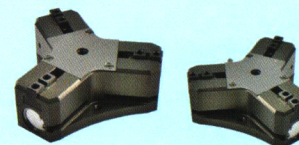
**PARALLEL GRIPPERS (2 Finger)**  
**MCHH series**  
Bore size:  $\phi 20\sim\phi 40$



**PARALLEL GRIPPERS (2 Finger)**  
**MCHS series**  
Body specification: 50~300

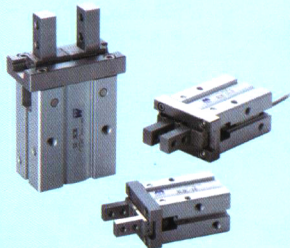


**PARALLEL GRIPPERS (3 Finger)**  
**MCHK series**  
Stroke: 20, 30, 50 mm



**PARALLEL GRIPPERS (2 Finger)**  
**MCHC series**  
Bore size:  $\phi 10\sim\phi 25$

- Gripper design with high rigidity rail integrated structure.
- Enhance mounting positioning preciseness:
  1. Body thickness tolerance  $\pm 0.05\text{mm}$
  2. Mounting hole at body end to ensure mounting precision.
- Enhance precision, may apply to high precision machinery.
- Sensor switch designed to embedded into the body.



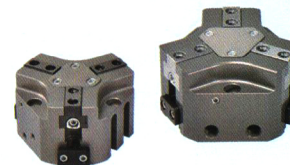
**PARALLEL GRIPPERS (2 Finger)**  
**MCHQ series**  
Body diameter: 64~160



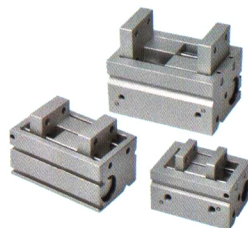
**PARALLEL GRIPPERS (3 Finger)**  
**MCHG series**  
Body diameter:  $\phi 50\sim\phi 160$   
**MCHG2 series**  
Bore size:  $\phi 16\sim\phi 125$   
**MCHG2L series**  
Bore size:  $\phi 16\sim\phi 80$



**PARALLEL GRIPPERS (3 Finger)**  
**MCHJ series**  
Body specification: 50~160



**PARALLEL GRIPPERS (2 Finger)**  
**MCHU series**  
Bore size:  $\phi 12\sim\phi 20$



**PARALLEL GRIPPERS (3 Finger)**  
**THROUGH CENTER HOLD TYPE**  
**MCHGH series**  
Body diameter:  $\phi 64\sim\phi 160$



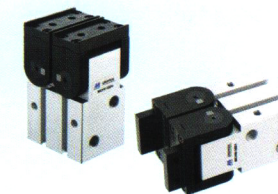
**30° ANGULAR GRIPPERS**  
**MCHA series**

- Available with a comprehensive selection of bore size ( $\phi 12\sim\phi 32$ ) for the various needs.
- The highly accurate, air-driven open closed work.

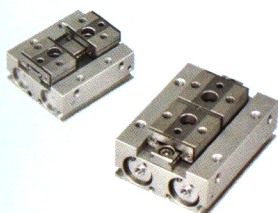


**180° ANGULAR GRIPPERS**  
**RACK & PINION STYLE**

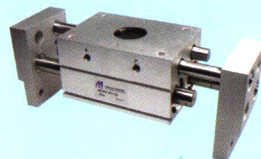
- MCHW series**  
Bore size:  $\phi 20\sim\phi 50$



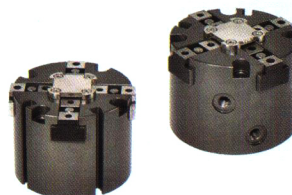
**PARALLEL GRIPPERS (2 Finger)**  
**MCHD series**  
Bore size:  $\phi 8\sim\phi 20$



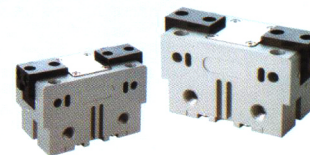
**PARALLEL GRIPPERS (2 Finger)**  
**WIDE TYPE**  
**MCHX series**  
Bore size:  $\phi 10\sim\phi 32$



**PARALLEL GRIPPERS (4 Finger)**  
**MCHGF series**  
Body diameter:  $\phi 50\sim\phi 125$



**40° ANGULAR GRIPPERS**  
**MCHT series**  
Body specification: 80~160



**180° ANGULAR GRIPPERS**  
**CAM STYLE**

- MCHY series**  
Bore size:  $\phi 10\sim\phi 25$

